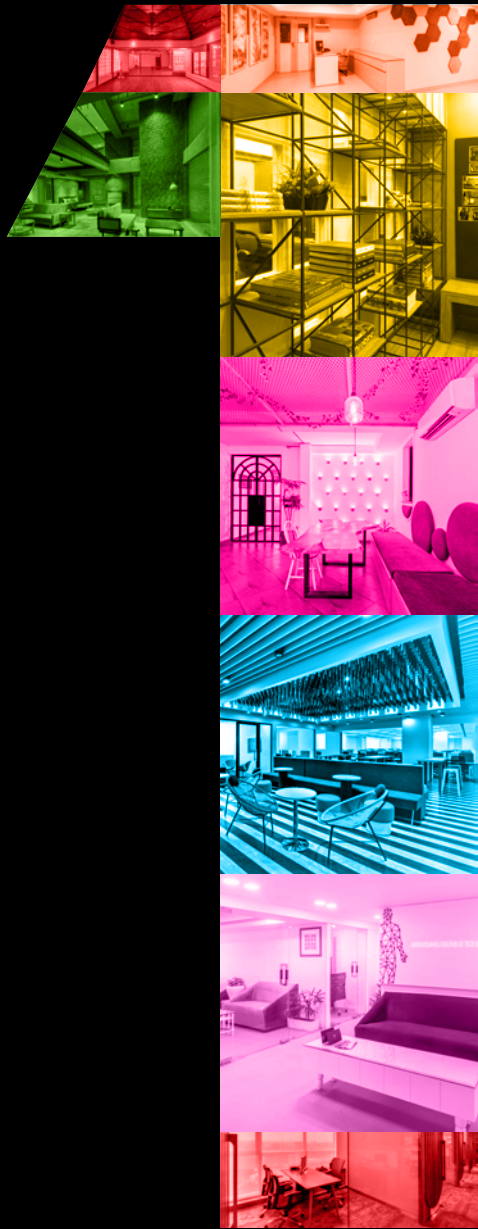


# interiors<sup>®</sup>

INDIA



## TOP 10

- YOUNG ACHIEVERS
- COMPACT SPACES
- SUSTAINABLE SPACES
- UNIQUE MATERIALS

# ANNIVERSARY SPECIAL



Photographs and paintings add a personal touch to the space when complemented with a live-edge dining table made of solid wood.

# A MINIMALIST APPROACH

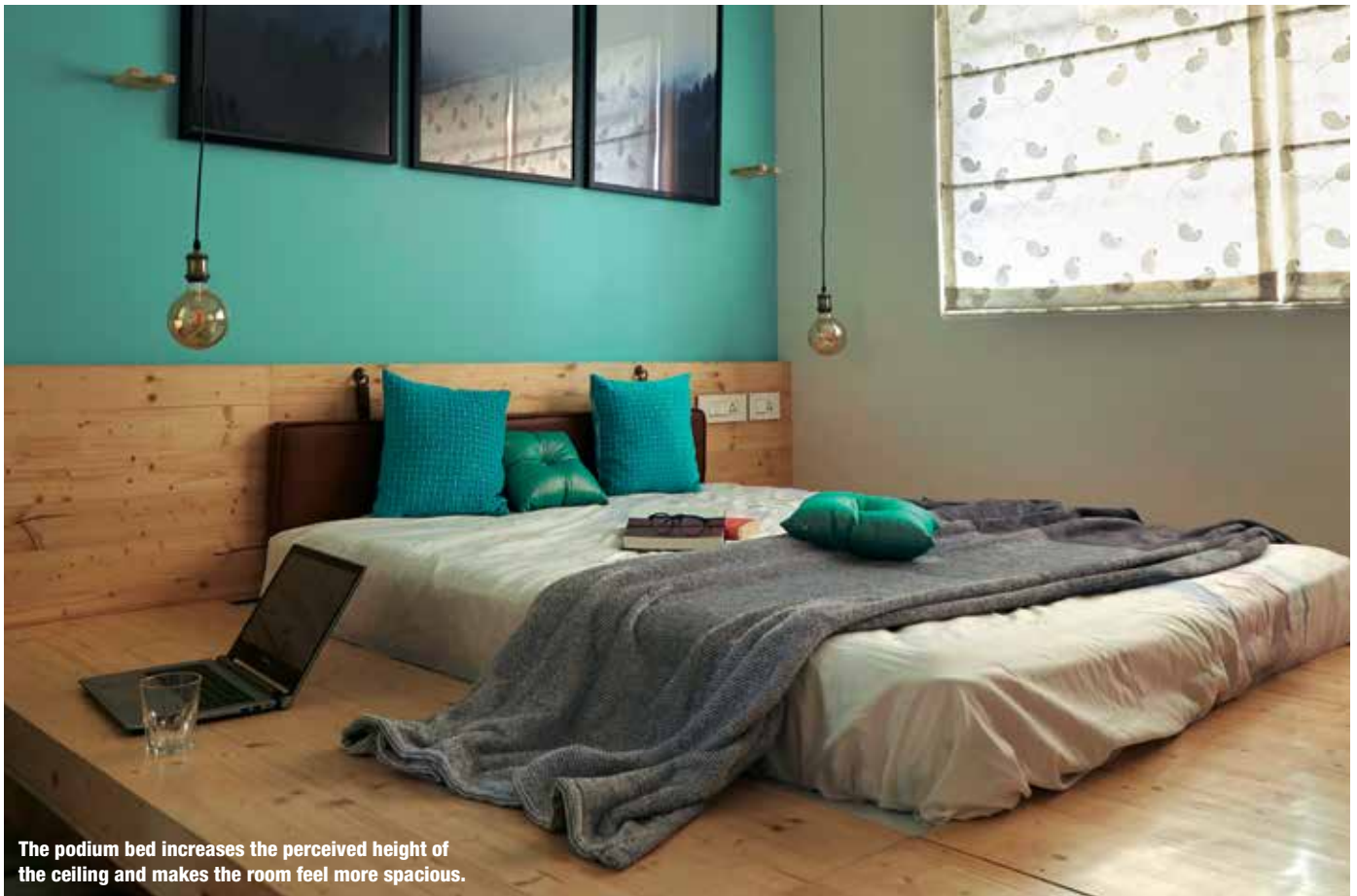
This modern apartment in Thane, by Bhumi Design + Studio, is high on comfort and functionality.

**W**hen one enters the apartment inside Thane's Lodha Luxuria Priva, one doesn't realise that it sits on just 767 sq ft. To make it even more challenging for the Bhumi Design team, the clients wanted this house built to accommodate at least eight people. "Thankfully, the original layout had a lot of scope for us to improvise. We stuck to our basic design philosophy of 'keeping it minimal and making it functional,'" **Hrishikesh More, Principal Architect, Bhumi Design + Studio**, says.

The walls were kept white as a canvas with a single highlighted wall with a pastel colour. The furniture pieces had white PVC laminate finish with natural polished pine wood, to add



Flexible furniture pieces help in ease of movement and the indoor plants add to the visual appeal.



The podium bed increases the perceived height of the ceiling and makes the room feel more spacious.



**Hrishikesh More**, Principal Architect, Bhumi Design + Studio

PHOTO COURTESY: SHIVKUMAR DHALE

warmth and texture to the space. Indoor planters added the much needed freshness to the matchbox apartment. “We kept the floors clutter-free and created ample storage spaces without hampering the aesthetics or making the rooms claustrophobic,” More says.

To make maximum utilisation of available space, a sofa-cum-bed was added in the living room, while in the Master bedroom, a Japanese podium bed was introduced to maximise the bed space. By elevating the bed by a foot, More’s team was able to add storage space. “All the furniture pieces were designed to suit the small apartment. For example, the centre table, when not in use, can be tucked beneath the side ledge of the sofa-cum-bed. We uplifted the mood and kept it youthful by adding industrial-style light fixtures. As we had to stick to a tight budget, we chose to use polished pine wood to design all the furniture pieces,” More says. Since the clients were well-travelled, it became important for the design team to add an element of wanderlust and adventure to the house. One wall was selected for this purpose and it was treated like a canvas from which frames of monochrome city maps were hung.

Although lack of available space was a challenge, More and his team maximised style and efficiency quotient by using an apt material palette, minimal yet multi-functional furniture and an organised and simplified layout. While bright lights and vertical outlines made rooms appear bigger, exposed shelving provided room for organising and maximising storage options. “Apartments in cities are shrinking and smaller houses are in trend. So, as a designer even we need to be smarter to make maximum use of such spaces,” More says. ■

**Contact: Bhumi Design + Studio, 2nd floor, Siddeshwar Archade, besides Prakruti Hospital, Kalwa West, Thane 400605, Tel: +91 981998648**